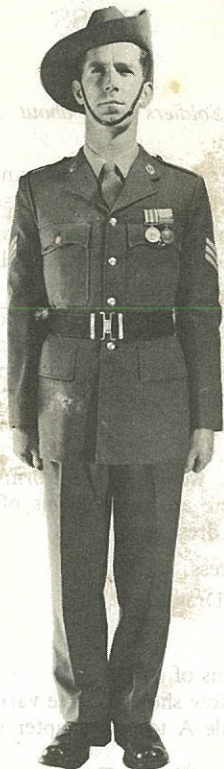


## SERVICE DRESS, WINTER, CEREMONIAL



Felt hat  
or  
Beret

As appropriate to  
corps or unit.

Service dress jacket

With lanyard, if issued

Khaki shirt

Khaki necktie

Service dress trousers

Khaki socks

Black boots

or

Black shoes

When not on parade

Black web belt

Sidearms and personal weapons

As ordered.

Orders, decorations and medals.

## DRESS

### Introduction

501. The question is: "Why do all Soldiers worry about their dress?" The answer is threefold, namely:

- a. As a matter of respect. To gain self respect and the respect of others, military and civilian, we must be smart, clean, and have a soldierly bearing.
- b. For pride in what we represent. In our uniform we represent our own person, our unit, our Corps, the Army, and above all, Service to our Country. The uniform we wear has to be worn properly.
- c. The majority of the Australian people know no more about the modern Army than they see and hear. They often see soldiers, from whom they judge the Army, on the town or city streets. If we are to justify our existence, we must let the Australian people see a smart and efficient Army.

### Forms of Dress

502. The regulations governing the wearing of uniforms within the Army are laid down in "The Dress Manual". Basically there are three forms of dress which you will have to wear during your service. These forms of dress are:

- a. Ceremonial Orders of Dress.
- b. General Duty Orders of Dress.
- c. Field Dress.

503. Within each of the above forms of dress, there are specific orders of dress for particular occasions. The photographs that follow show you the various orders of dress and list the equipment worn with them. Table A to this chapter tells you when you may be required to wear them:

### TABLE A

Winter	Summer
<b>CEREMONIAL ORDERS OF DRESS</b>	
Service dress, winter, ceremonial. All ARA. Officers and WOs only CMF under special circumstances.	Summer dress, ceremonial. All ARA and CMF.
Battledress, ceremonial. All CMF and ARA parading with the CMF.	Tropical dress, ceremonial. All ARA and CMF in the tropical zone.
Blue ceremonial dress. Special personnel only, eg. Bandsmen.	
<b>GENERAL DUTY ORDERS OF DRESS</b>	
Service dress, winter. All ARA. Officers and WOs only CMF.	Summer dress. All ARA and CMF.
Battledress. All ARA and CMF.	Tropical dress. All ARA and CMF in the tropical zone.
<b>FIELD DRESS</b>	
Field dress All ARA and CMF.	Field dress. All ARA and CMF.

## BATTLE DRESS, CEREMONIAL



Felt hat or Beret or Helmet liner	} As appropriate to corps or unit.
Battle dress blouse	If ordered.
Khaki shirt	With lanyard, if issued
Khaki necktie	
Battle dress trousers	
Khaki socks	
Black boots or Black shoes	When not on parade
Black gaiters	As ordered
Black web belt	
Sidearms and personal weapons	As ordered
Orders, decorations and medals	

## BLUE CEREMONIAL DRESS



Blue cap or Beret or White helmet	} }	As appropriate to corps or unit.
Blue jacket		When authorized
White shirt		
White collar Black necktie	} }	With open neck jacket only.
Blue trousers		As appropriate to corps.
Black socks		
Black boots or Black shoes		When not on parade.
White web belt or Black web belt		For RAA Pro Corps
White gloves or Brown gloves	} }	As appropriate, and when ordered.
Sidearms and personal weapons		As ordered
Orders, decorations and medals		

## SUMMER DRESS, CEREMONIAL



Felt hat or Beret	}	As appropriate to c unit.
Khaki shirt		With lanyard, if issu
Khaki tie		
Khaki trousers		
Khaki socks		
Black boots or Black shoes		When not on parad
Black web belt		
Sidearms and personal weapons		As ordered.
Orders, decorations and medals		

## TROPICAL DRESS, CEREMONIAL



Felt hat or Beret	}	As appropriate to c as ordered.
Green shirt		With lanyard if issu
Green shorts		
Hosetops and puttees or Stockings		When boots are we When not on para
Black boots or Black shoes		When not on para
Black web belt.		PIR wear leather w
Sidearms and personal weapons		As ordered.
Orders, decorations and medals.		

## BATTLE DRESS



Beret

As appropriate to corps, or  
as ordered.

Battle dress blouse.

With lanyard, if issued.

Khaki shirt

Khaki necktie

Battle dress trousers

Khaki socks

Black shoes

or

Black boots

May be ordered by the CO.

Black gaiters

May be ordered by the CO,  
if boots and the black web  
belt are also ordered.

Black web belt

May be ordered by the CO.

Brown leather gloves }  
or  
Khaki knitted gloves }

Optional when not on  
parade.

Ribbons of orders, decorations and  
medals.

## SERVICE DRESS, WINTER



Beret  
or  
Khaki cap }

As appropriate to corps, or  
as ordered.

Service dress jacket

With lanyard, if issued.

Khaki shirt

Khaki necktie

Service dress trousers

Khaki socks

Black shoes

Khaki cloth belt

Brown leather gloves  
or  
Khaki knitted gloves }

Optional when not on  
parade.

Ribbons of orders, decorations and  
medals.

## SUMMER DRESS



Felt hat  
or  
Beret

Khaki shirt

Khaki necktie

Khaki trousers

Trouser belt

Jersey

Khaki socks

Black shoes

or  
Black boots

Ribbons of orders, decorations  
and medals.

As appropriate to corps,  
or as ordered.

With lanyard, if issued.

May be omitted with the  
CO's authority.

If ordered.

May be ordered.

## TROPICAL DRESS



Felt hat  
or  
Beret

Green shirt

Green shorts

Stockings

or  
Hosetops and puttees

Black shoes

or  
Black boots

Black web belt

Ribbons of orders, decorations  
and medals.

As appropriate to corps,  
or as ordered.

With lanyard, if issued.

When boots are worn.

May be ordered.



## FIELD DRESS



Felt hat or Beret or Steel helmet or Helmet liner	}	As appropriate or as ordered.
Green shirt		
Green trousers		
Jersey		As ordered.
Khaki socks		
Black boots		
Black gaiters		
Web equipment or Black web belt	}	As ordered.

### Civilian Dress

504. Civilian Dress, which may be worn on the approval of your Commanding Officer, is your own choice in style and colour. The only restrictions placed by the Army are that the dress is to be:

- a. Clean.
- b. In good repair, and
- c. In good taste.

### Badges of Rank

505. The equivalent badges of rank of officers and non-commissioned officers of the other Services are given in Plate 1. You must learn to recognise the rank being worn by other Services, and pay the appropriate compliments.

# OFFICERS

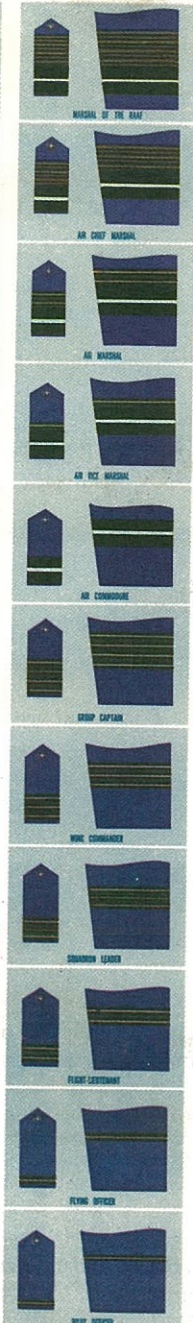
## NAVY



## ARMY



## AIR FORCE



# NON-COMMISSIONED OFFICERS

## NAVY



## ARMY



## AIR FORCE



### NAVY DISTINCTION MARKS OF BRANCH

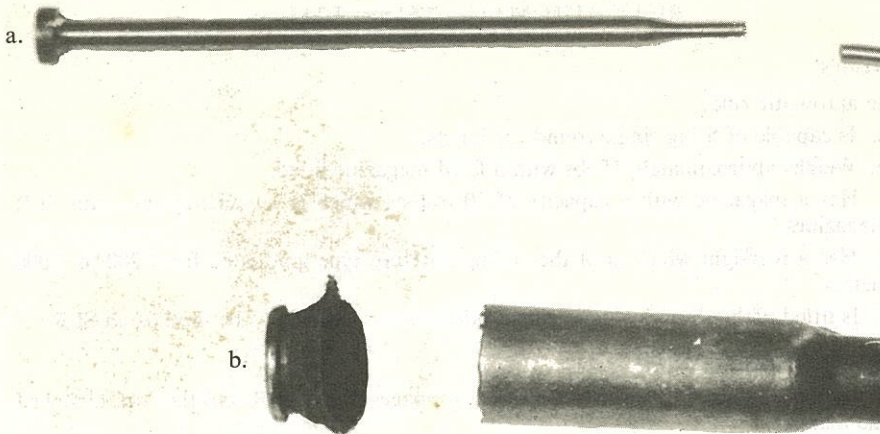


### ARMY CORPS COLOURS



### AIR FORCE BADGES





a. Broken Firing Pin.

b. Separated Case.

---

RIFLE AUTOMATIC 7.62 mm L2A1

(See Inf Trg Vol I, Inf Pl Weapons Pam 3B  
The 7.62 mm Self Loading Rifle and Bayonet  
(All Arms) 1961, Chapter 3.)



## RIFLE AUTOMATIC 7.62 mm L2A1

### Characteristics

713. The automatic rifle:

- a. Is capable of firing single rounds or bursts.
- b. Weighs approximately 15 lbs with a filled magazine fitted.
- c. Has a magazine with a capacity of 30 rounds which is interchangeable with SLR magazines.
- d. Has a rearsight which is of the sliding aperture type graduated from 200 to 1,000 metres.
- e. Is fitted with a bipod which, when folded, allows the rifle to be fired as an SLR.

### Stoppages and Immediate Action

714. This weapon is subject to exactly the same stoppages as the SLR and they are remedied in the same manner.

### Mechanism

715. The mechanism of the automatic rifle is different to that of the SLR only in that it is fitted with a change lever and sear which enable the weapon to fire automatically as well as firing single rounds.

### Rates of Fire

716. a. SLOW — One magazine per minute.  
b. RAPID — As many well aimed shots as the firer can produce. This may be up to three magazines per minute.

717. This weapon is similar to the SLR in all aspects, except that it is fitted with a bipod and heavy duty barrel, a magazine with a larger capacity, and may fire automatically.

---

## 9mm OWEN MACHINE CARBINE

(See Inf Trg Vol I, Inf Pl Weapons Pam 4  
(Aust) Machine Carbines (All Arms) Owen  
Machine Carbine 1949)

### Characteristics

718. a. An easily handled weapon capable of producing a large volume of fire when engaging targets of ranges up to about 100 metres.  
b. It may be fired from the hip, using sense of direction, at ranges up to about 25 metres.  
c. The Carbine weighs approximately 11 pounds, with a full magazine.  
d. It fires 9mm rimless ammunition. Most foreign pistol and machine carbine ammunition of this calibre may also be used.  
e. Magazine capacity is thirty two rounds.  
f. A bayonet may be fitted to the carbine but not an SLR type bayonet.